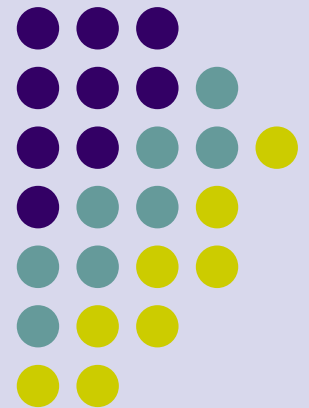
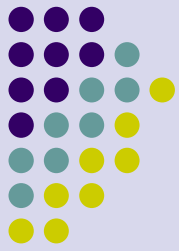


# Creating Printed Tests

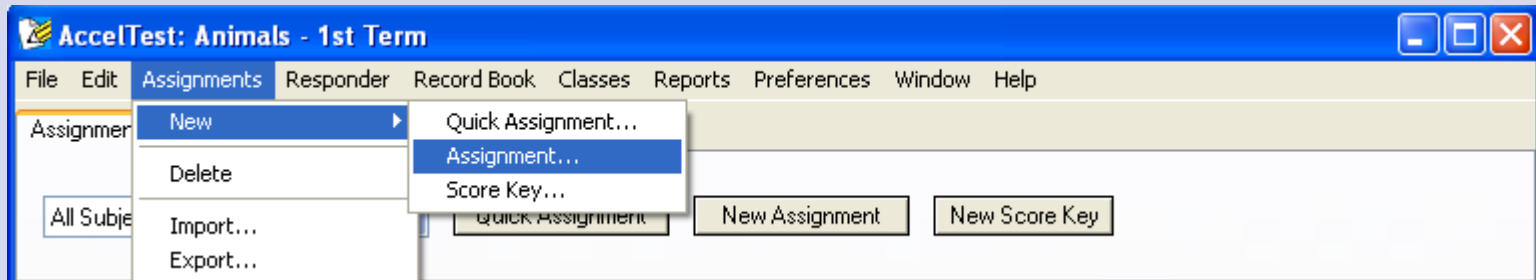
---

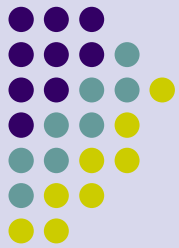
A Step by Step Guide





In AccelTest click on Assignments and go to New Assignment.





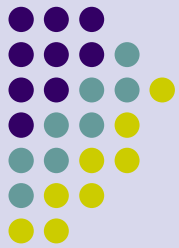
In the New Assignment box give the assignment a title.

Find 'This assignment will be' and click Printed.

You will find that all the 'Score your assignment with' options become active.

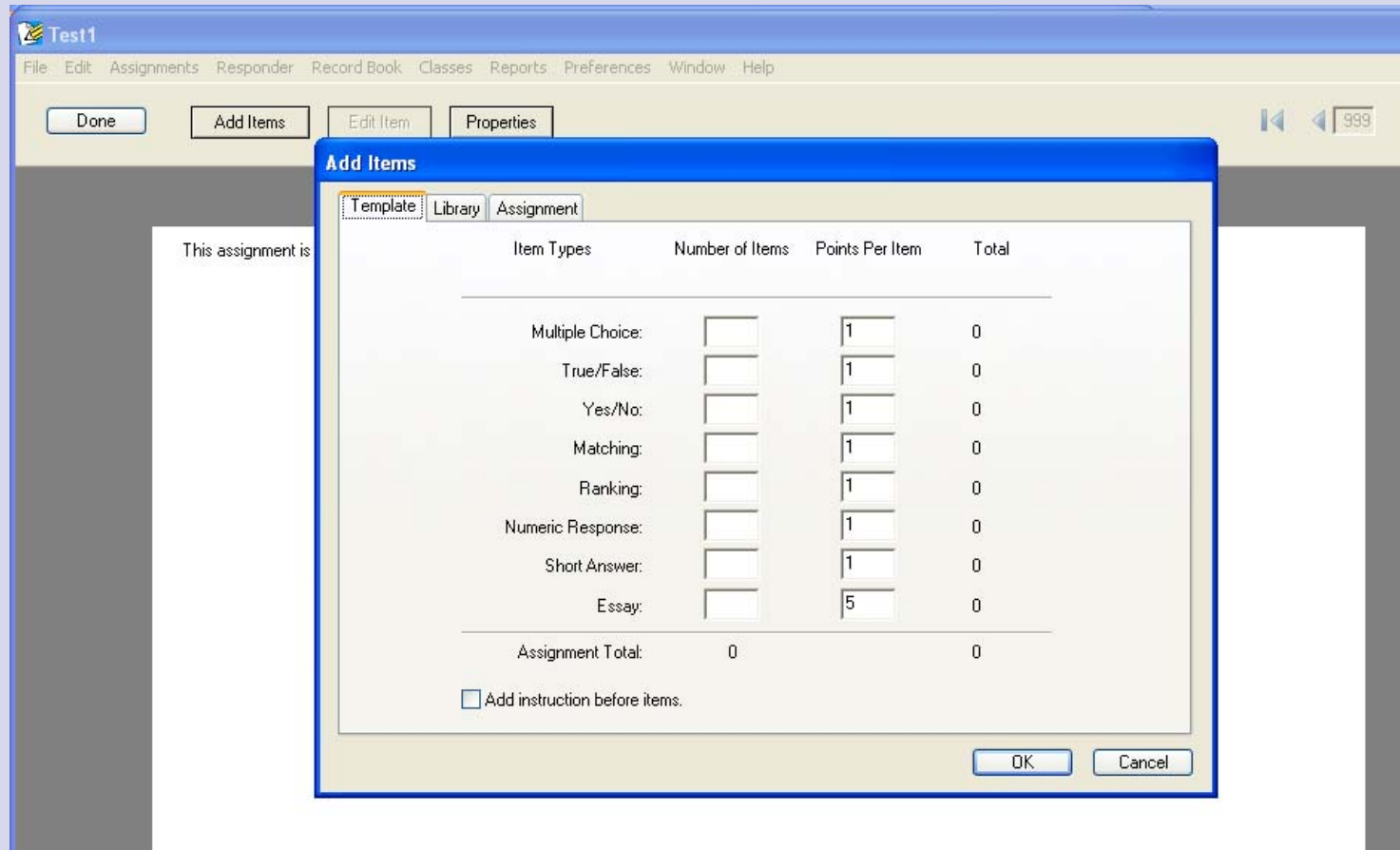
Select Responder and the click OK.

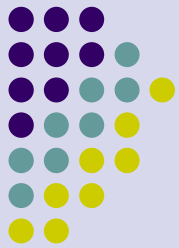
The screenshot shows a dialog box titled "New Assignment" with a blue header. Below the title, it says "Fill in the details for your assignment." There are two input fields: "Title:" with the text "Test1" and "Subject:" with a dropdown menu showing "English/Literacy". Below these are two sections of radio buttons. The first section, "This assignment will be:", has three options: "Items on Responder", "Projected", and "Printed" (which is selected). The second section, "Score your assignment with:", has three options: "Responder" (which is selected), "Scanner", and "Manual". At the bottom right, there are "OK" and "Cancel" buttons.



The layout for creating your questions will appear.

Select the types of question you want to ask and complete them as usual.





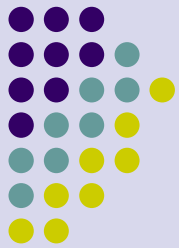
The questions will appear as a printed sheet behind the table.

The screenshot shows a software window titled "Item 1 of 2" with a menu bar (File, Edit, Assignments, Responder, Record Book, Classes, Reports, Preferences, Window, Help) and a toolbar. The toolbar includes a font dropdown set to "Times New Roman", a size dropdown set to "12", and buttons for bold (B), italic (/), underline (U), "Graphic...", "Equation...", and "Plot...". Below the toolbar are settings for "Choices: 5", "Columns: 2", and "Shuffle: All".

The main area contains four input fields:

- Question:** An empty text box.
- Choices:** A list of five options labeled A through E, each with an empty text box.
- Answer:** A text box containing the letter "A".
- Points:** A text box containing the number "1".

At the bottom, there are navigation buttons: "< Previous", "Next >", "Cancel", and "OK".



Create the questions you wish to have answered and, once completed, make certain that you save your assignment  
When you select this assignment you will need to follow the steps to match the assignment form number with the responder as in Accelerated Maths type assignments.