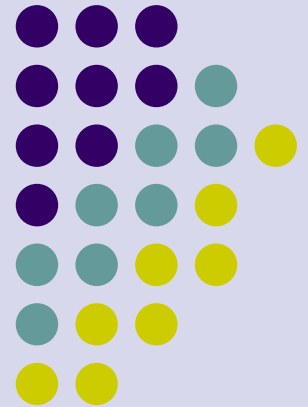
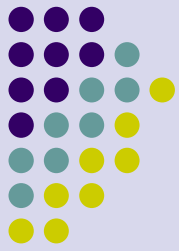


Using two screens

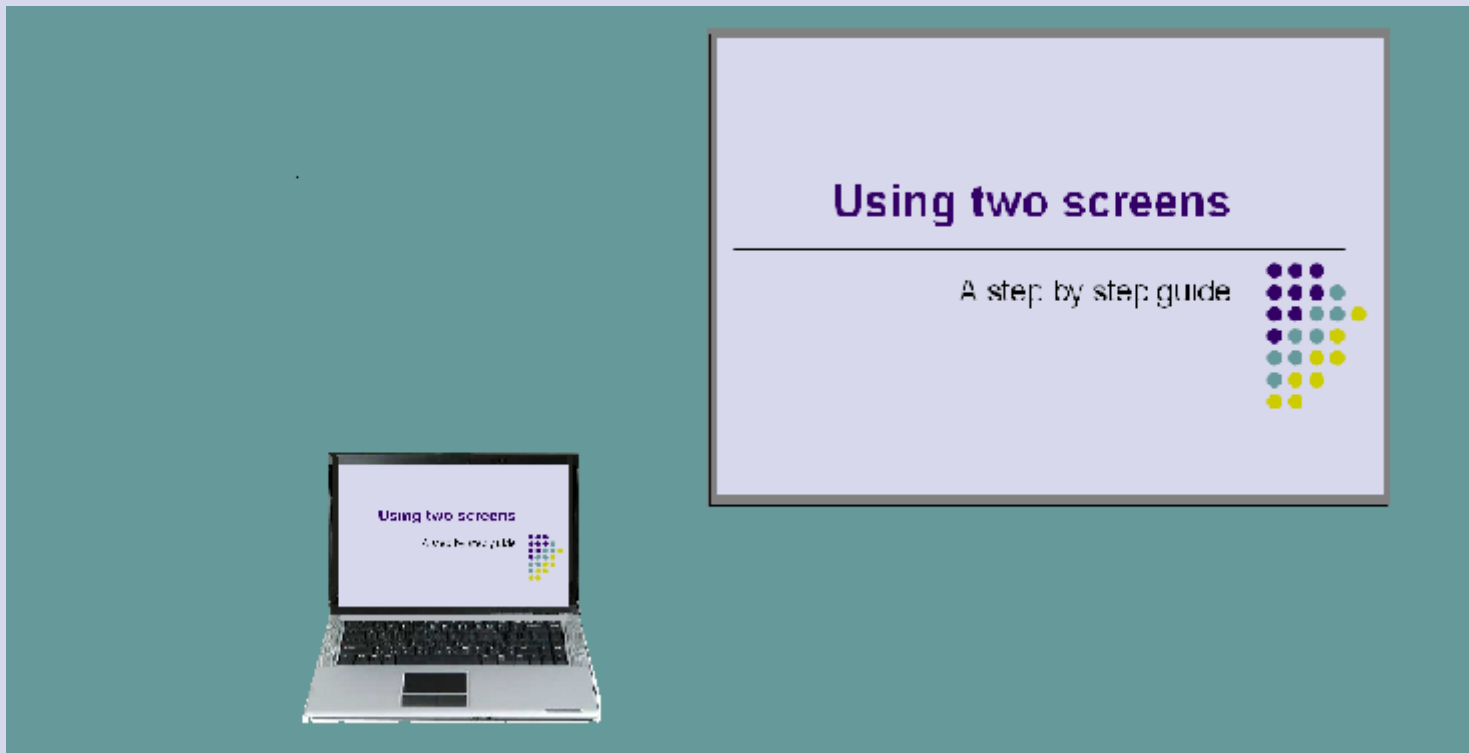
A step by step guide to having two screen to run AccelTest.

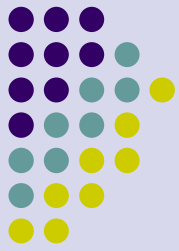




Normal settings

Usually, when you are using a laptop with a digital projector, the image that you see on the screen is the same as that on the laptop monitor

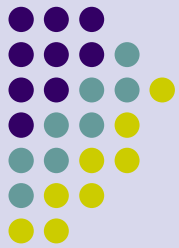




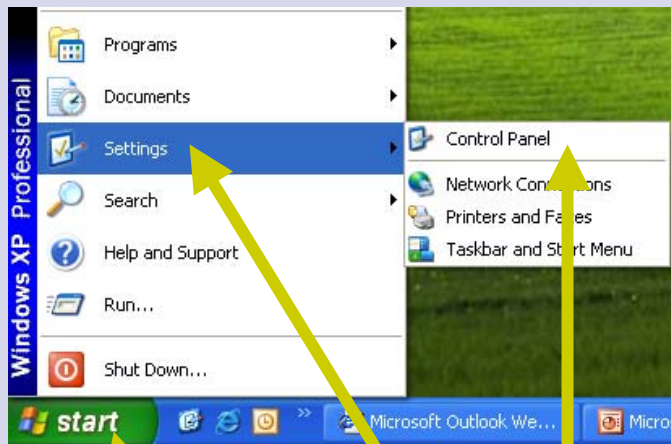
Two images

But it is possible to run quite different sets of images on each display.
This will only work if the computer you are using is a laptop.

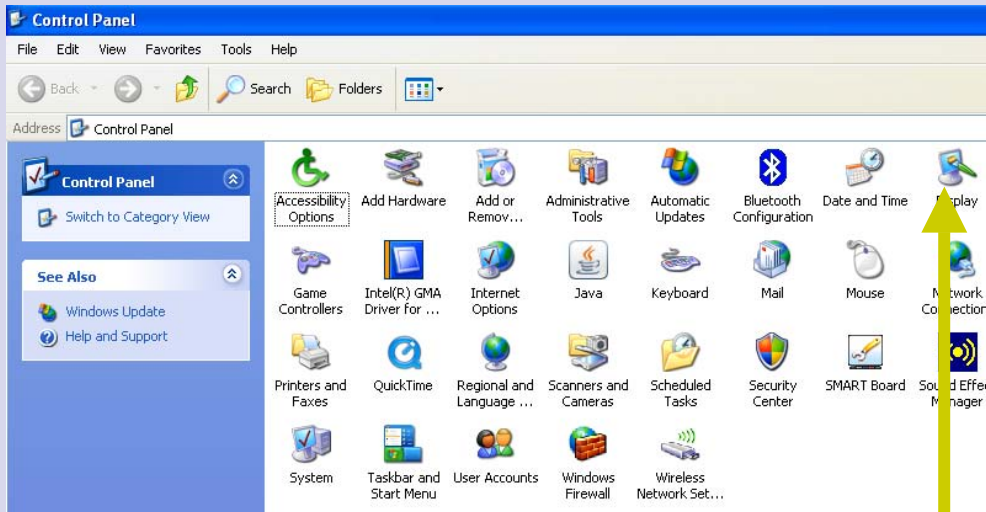
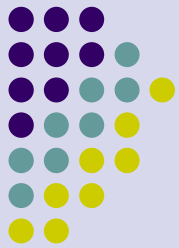




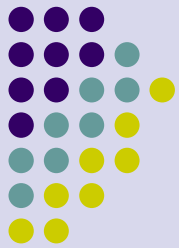
How it's done



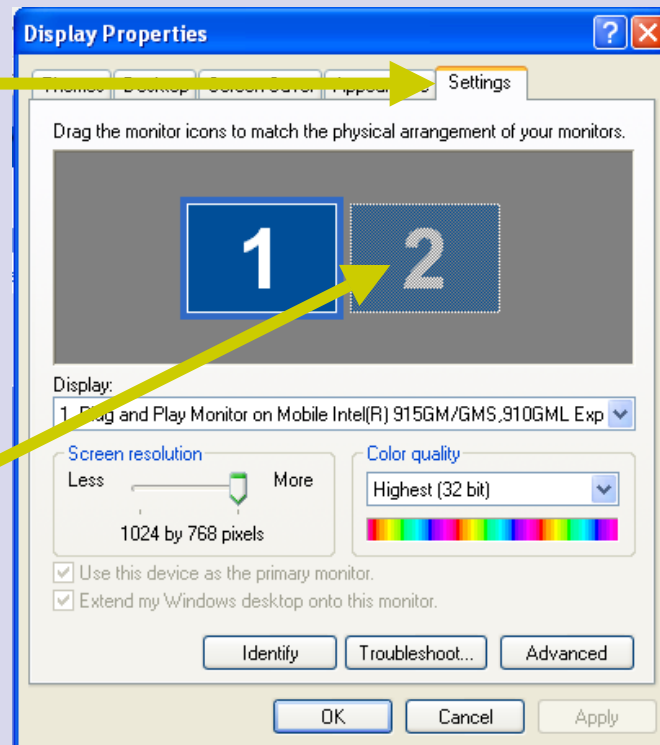
- Click on **start**
- Move up to **Settings**
- Select **Control Panel**

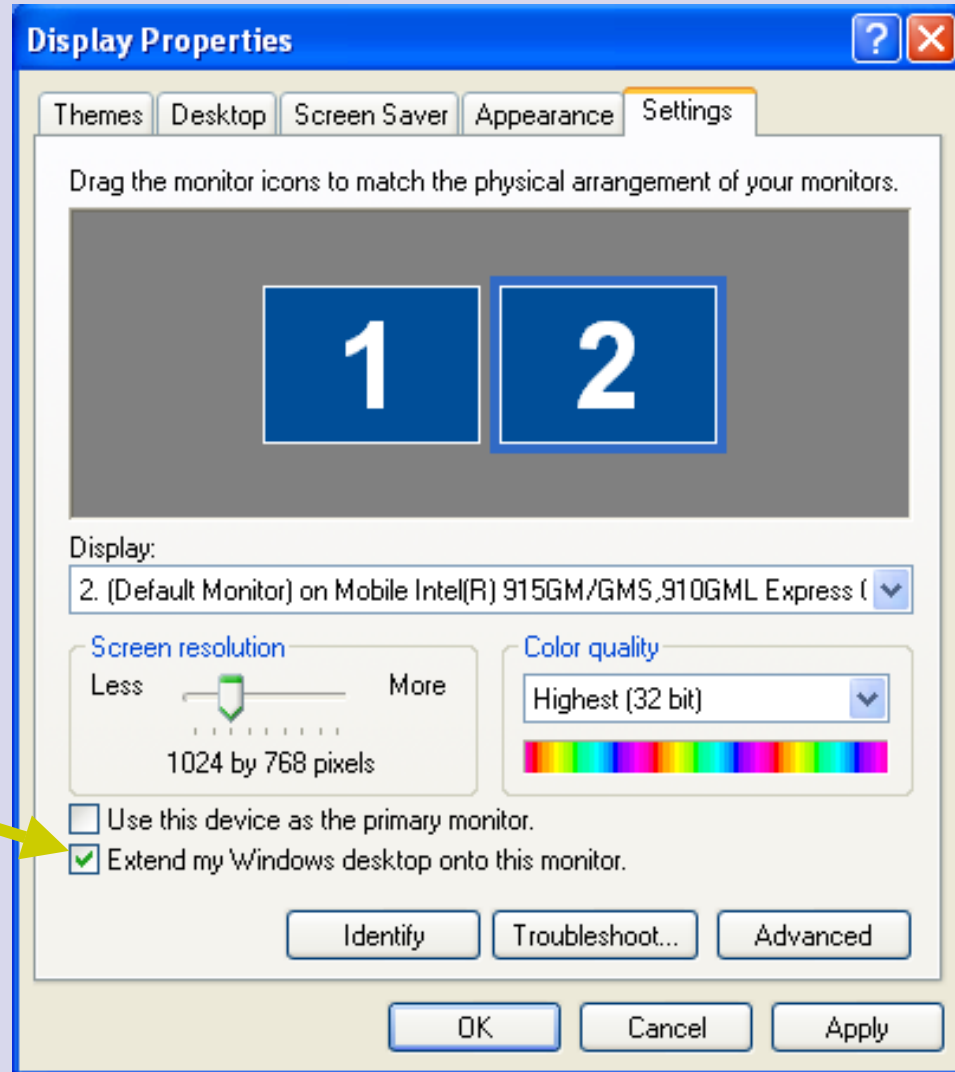
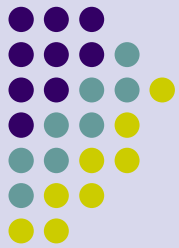


From the Control Panel Menu select **Display**



- In Display Properties select the settings menu.
- You will see two screens displayed.
- Click on screen 2





Click the box
'Extend Windows
desktop into this
monitor'

You should find that your laptop will show the normal desktop and the projected image shows a 'continuation'. You are now able to move applications etc. onto the projected screen by dragging them across from the laptop

